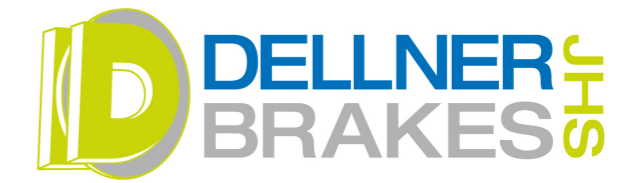


Active rotor brakes



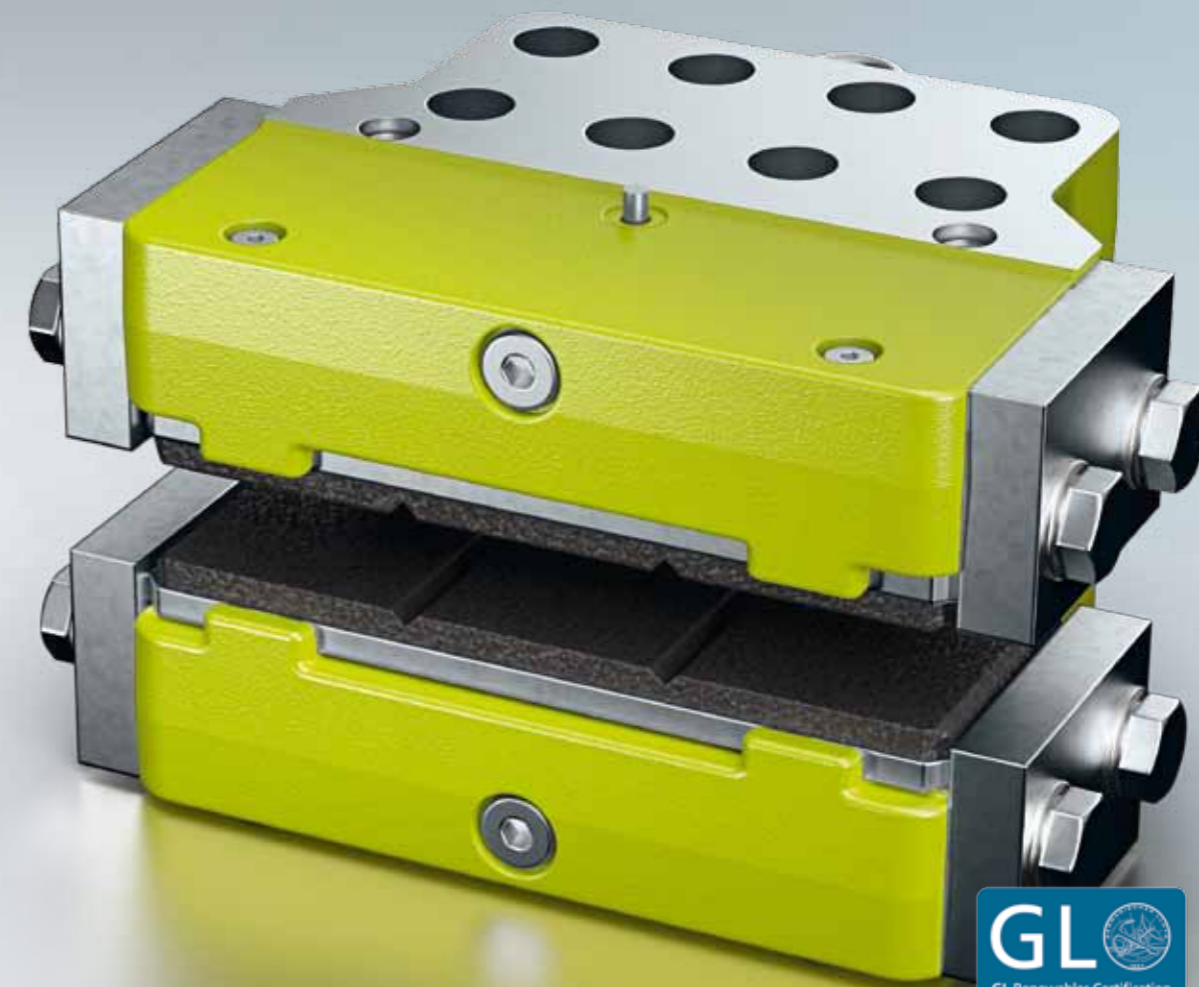
hält



Any component is only ever as good as its ability to work alongside other components. We are always prepared to further develop even the most proven technology if the need is there. Our entire store has to be able to provide modular responses for this.

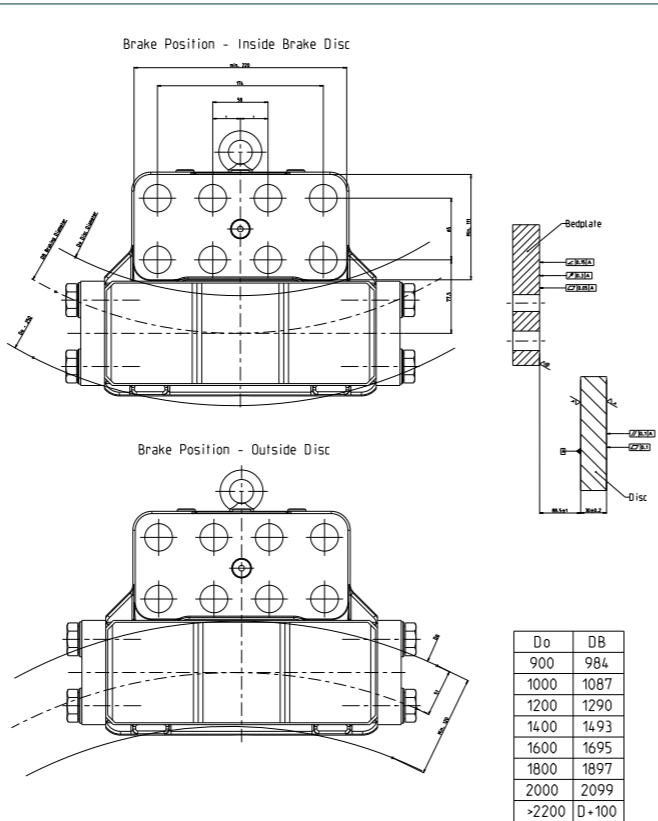
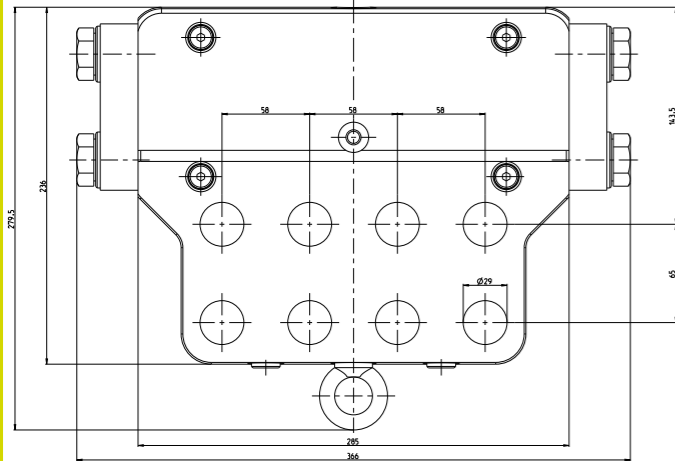
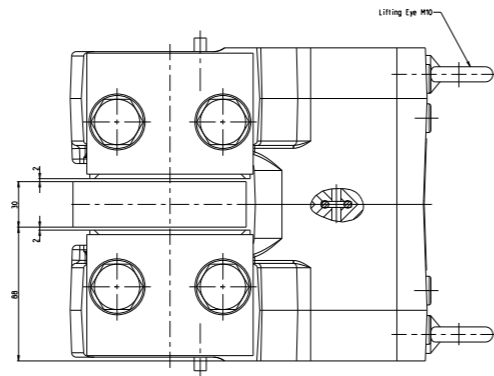
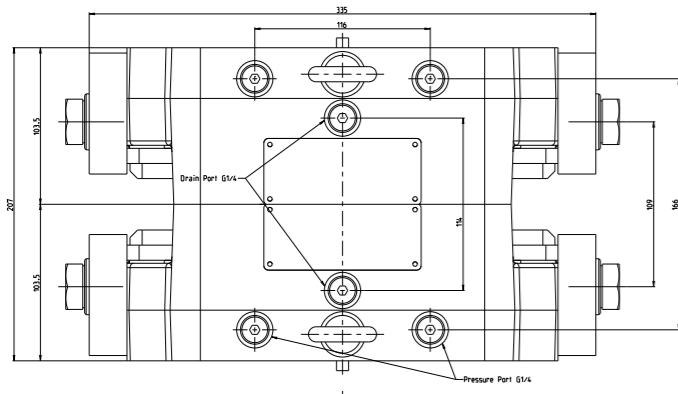
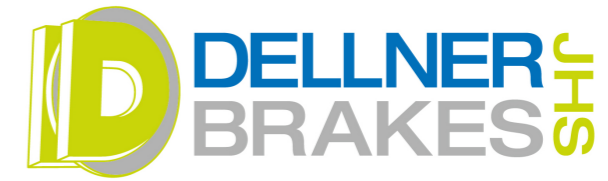
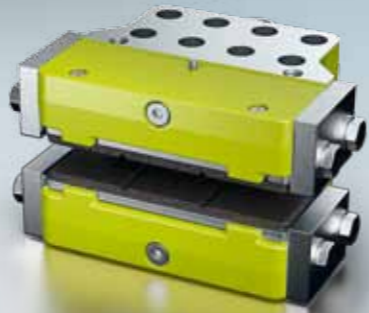
Markus Wagner, Logistics

JHS-22-LS



- Brake hydraulically applied
- Airgap between brake pad and disc up to 2 mm per side
- Organic linings
- Tight fitting between brake pad and caliper
- Drain ports for hydraulic oil leakage, prevents oil on brake disc, high safety
- Min. / Max. working temperature -40 / +60 °C

JHS-22-LS

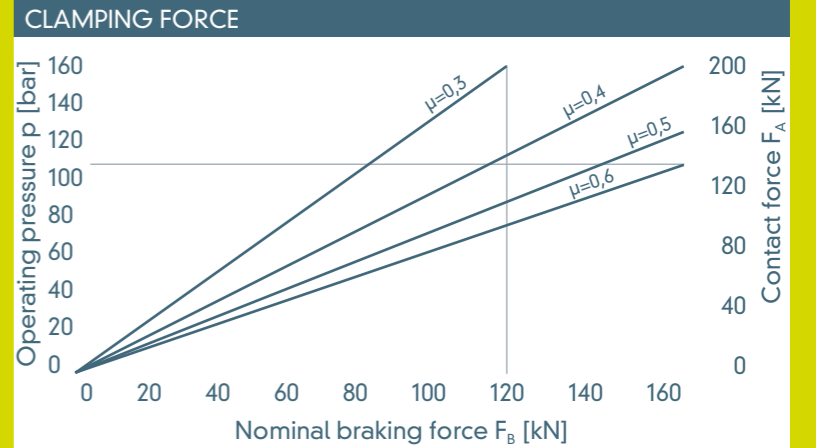
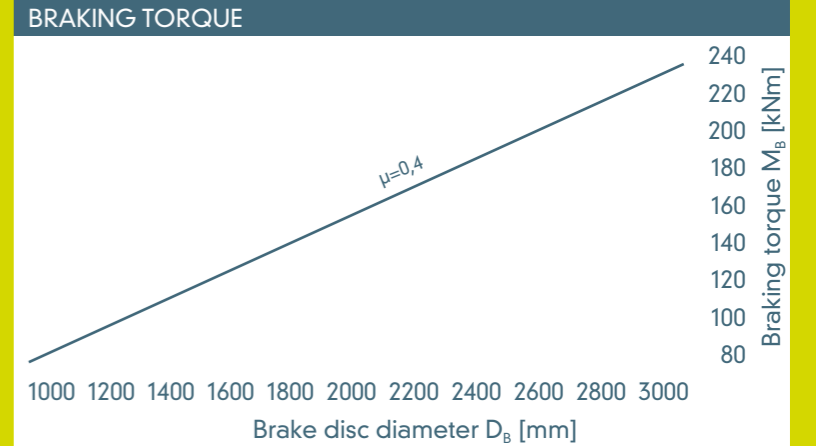


TYPE JHS-22-LS	
Contact force F_A	200 kN
Operating pressure p (max)	160 bar
Piston area (per side)	127 cm ²
Volume at 1 mm stroke (per side)	12,7 cm ³
Temperature range	-40 / +60 °C
Weight	60 kg
Pressure connection port	G1/4
Drain connection port	G1/4

BRAKE PAD	
Pad area (each side)	310 cm ²
Brake pad width	110 mm
Theor. friction coefficient	0,4-0,6 μ
BRAKE DISC	
Brake disc ϕd_2	1000 mm
Disc thickness (standard)	30 mm

BRAKING TORQUE	
Braking torque formula:	
$F_A = p \times 1,272$	
$F_B = F_A \times 2 \times \mu$	
$M_B = a \times F_B \times D_B / 2$	

- F_A = Contact force [kN]
- p = Operating pressure [bar]
- F_B = Nominal braking force [kN]
- M_B = Braking torque [kNm]
- a = Number of calipers acting on the disc
- D_B = Brake disc diameter [m]



- OPTIONS**
- Complete piped supports for one more calipers
 - Hydraulic power unit
 - Brake disc
 - Brake pad with different material
 - Brake pad wear indicator