

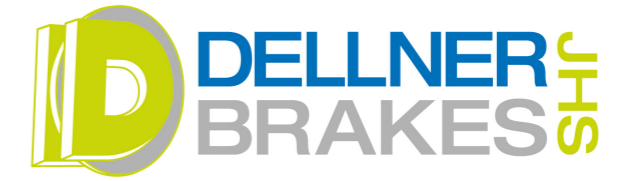
Service tools

hält

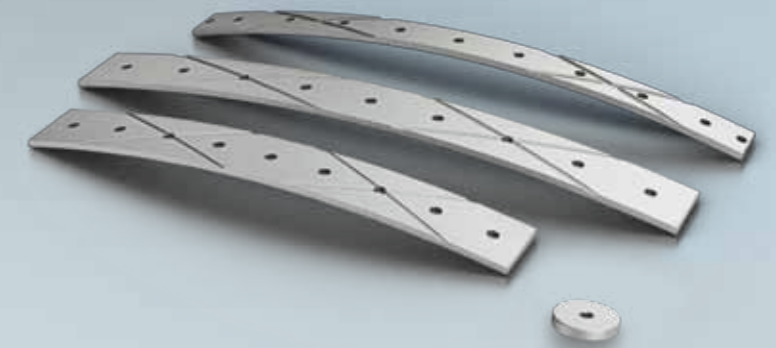


Our service tools make it easier for your technicians to install, remove or retrofit passive and/or active azimuth systems. Please contact us for further information and pricing details.

Service pads



SIDE LINER	
Max. dynamic load	10 N/mm ²
Max. static load	80 N/mm ²
Max. sliding speed	0,5 m/s
Typical friction coefficient	0,03-0,15 μ
Temperature range	-40 to 100 °C
Hardness of counter material	>160 HB
Surface roughness of counter material (Ra)	3,2-6,3* μm
*operation safety for pads Ra from 0,8 - 6,3 μm	



PISTON WITH BRAKE PAD JHS-1604	
Max. dynamic load	100 N/mm ²
Max. static load	200 N/mm ²
Max. sliding speed	0,5 m/s
Temperature range	-40 to 100 °C
Hardness of counter material	>160 HB
Surface roughness of counter material (Ra)	3,2-6,3* μm
*operation safety for pads Ra from 0,8 - 6,3 μm	

See pages 36-43 in this catalogue for further technical information about the JHS-1604 piston with brake pad.

The sliding bearing has to support not only the entire nacelle weight but also has to endure considerable loads – concurrently it has to operate reliably and failure free. The nacelle rotation is generated by multiple electric drives activated by signals anemometer and wind vane.

Friction bearings are used for the yaw bearings of wind turbines. They rotate easily via yaw drive but feature enough resistance to prevent the nacelle from rotation at slant wind flow. Based on our long time experience we supply the entire system if needed.